

# STREET LIGHT SOLUTIONS

LUMINAIRES, CONNECTION SYSTEMS & ACCESSORIES



FROM THE  
GROUND UP,  
WE'VE GOT  
YOU COVERED.

TransNet offer a comprehensive range of components for street light installations from solar to AC powered luminaires, connections, poles and more through to earthing, fusing and pits for supply from the network.

[www.transnet.co.nz](http://www.transnet.co.nz)

# CONTENTS

---

<b>SOLAR LED STREET LIGHT KIT</b>		<b>3</b>
COMPLETE KIT, 20W SOLAR STREET LIGHT WITH POLE	3	
<b>LED STREET LIGHTS</b>		<b>4</b>
LUXTELLA LED LUMINAIRES 14-151W	4	
LEDSTL - 50W, 100W, 150W & 200W LED LUMINAIRES	5	
LUXTELLA LED LUMINAIRES - AT & NZTA APPROVED	6	
<b>MAINS STREET LIGHT PIT SYSTEM</b>		<b>7</b>
SUBMERSIBLE FUSED ELECTRICAL SUPPLY TO LIGHT POLES	7	
<b>MAIN EARTH INSPECTION BOX</b>		<b>8</b>
TNERIB - EARTH ROD CONNECTION PROTECTION	8	
<b>STREET LIGHT CONNECTIONS</b>		<b>9</b>
FD150-1-NZ SINGLE PHASE STREET LIGHT CUTOUT	9	
TNSLPKIT - FUSED STREET LIGHT BOARD	10	
LVRG-NS-STL - STREET LIGHT JOINT UP TO 16MM <sup>2</sup> NEUTRAL SCREEN	10	
<b>LUMINAIRE COMPONENTS</b>		<b>11</b>
LEDSTL-ADAPTOR-35-42	11	
LEDSTL-74-60-BRAC	11	
LEDNL - PHOTOCELLS & BLANKING PLUGS FOR STREET LIGHTS	11	
<b>COMPONENTS</b>		<b>12</b>
65U - WATERPROOF FUSE CARRIER	12	
K223 - OVERHEAD FUSED IPC	12	
CH10-NB0xx - 10X38MM CYLINDRICAL HRC FUSE LINK	12	
TNEARTH TAG - PLASTIC EARTH IDENTIFICATION TAG	13	
TNSLGR3 - COMPLETE EARTH FOR STREET LIGHT POLES	13	
RAYCHEM GEL ENCLOSURE & MINI WEDGE	13	
GELWRAP18/4-250 - RAYCHEM GELWRAP	14	
GHFC - RAYCHEM GEL ENCLOSURE	14	
2-361372-1 - RAYCHEM GELCAP SL JOINT	14	
FCHDO40 - HEAVY DUTY FLEXI CONDUIT, ORANGE	15	
TRANSNET OFFERS A COMPREHENSIVE RANGE OF PRODUCTS...	15	

# SOLAR LED STREET LIGHT KIT

## COMPLETE KIT, 20W SOLAR STREET LIGHT WITH POLE

These 20W LED street light kits deliver exceptional performance while substantially reducing operational costs. The cutting edge Luxtella LED luminaire is one of the most efficient on the NZTA M30 list where its 2,500 lumen output is generated from just 19.5W, and replaces the traditional 70W SON street light. The design also incorporates excellent optical design and light distribution, and you can choose from two visually appealing luminaire designs. These kitsets are complete with all components required to commission the street light.



The battery is discreetly hidden away in a compartment near the top of the pole keeping it out of harms way.

### KITSET COMPONENTS

- 20W LED Street Light
- 115W Solar Panel
- 1 x Li-Ion battery (950Wh)
- 20A controller
- 5m Galvanised Steel Pole (Flange mounted & includes anchor bolts)

### APPLICATIONS

Perfect for locations where mains power is not currently available, pedestrian and cycle paths, parks and reserves, public areas such as shopping precincts, outdoor car parks etc.

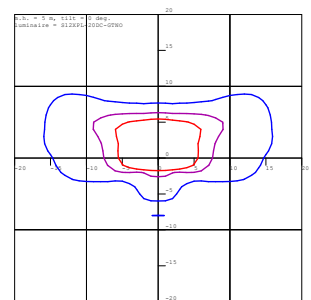
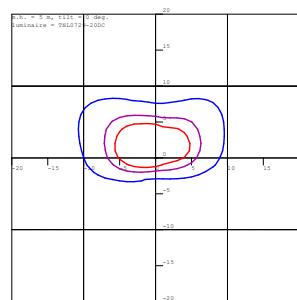
### LEDSOLAR-ST20ECO



### LEDSOLAR-ST20XPL



### ISOLUX PLOTS



Fixture/Cat No.	LEDSOLAR-ST20ECO	LEDSOLAR-ST20XPL
Luminaire	TNL0729-20DC12	S12XPL-20DC-GRN0
Luminaire Power	20W	20W
Luminaire Input Voltage	12V DC	12-24V DC
Luminaire Weight	4kg	4kg
Luminaire Dimensions	500 x 278 x 122mm	488 x 275 x 82mm
Colour Temperature	5700K	4000K
Lumens	1980	2500



# LED STREET LIGHTS

## LUXTELLA LED LUMINAIRES 14-151W

The LEDLUX range are cutting edge tunable LED luminaires perfect fit for most Road lighting applications.

The design incorporates high lumen output Cree XPL chips driven by Philips Xitanium Dali drivers all contained within a robust IP66 housing.

Standard models come with Nema 7 multi-channel photo control receptacle that allows optional dimming functions including photocell or wireless sensor.

This European manufactured luminaire delivers exceptional performance that will at the same time substantially reduce operational costs in both energy use and in maintenance.

Different beam angles and tunable drive current mean that we can custom design light output to best suit road category or application.



### APPLICATIONS

- City streets
- Highways
- Public parks
- Car parks
- Subdivisions
- Hospitals
- Corrections Facilities



Fixture/Part No.	S12XPL-42/14DC <sup>(1)</sup>	S12XPL-42/14 <sup>(1)</sup>	S36XPL-115/35 <sup>(1)</sup>	S72XPL-151/106 <sup>(1)</sup>
LED Power (W)	14-42	14-42	35-115	106-151
Total Power (W)	18-48	18-48	44-131	133-168
Lumen Output (Lm)	1750-4289	1750-4289	4800-13,950	15,350-20,650
Weight (kg)	4kg	4kg	7kg	7kg
LED Efficacy (fitting)	Fitting: 101 lm/W			
Optics	G (Type III), L (Type IV), C (Type II/III)			
Input Voltage	12-24V DC	220-240V		120-277V
Maximum Current	4A @ 12V DC	0.2A*	0.57A*	0.73A*
Maximum Inrush Current	N/A	<9.6A		<14A
Power Factor	0.96			
Colour Temperature	4000K			
CRI	>70			
Working Environment	-40°C up to 55°C			-40°C up to 40°C
IP Rating	IP66			
IK Rating	IK10 (Aluminium Housing)			
Wind Velocity	0.032m <sup>2</sup>			0.043m <sup>2</sup>
LED Brand	Cree XPL			
Driver	Philips Xitanium LED driver			
Dimming Receptacle	Timer, DALI or 1-10V			
Heatsink	Anodised Aluminium			
Spigot	Ø60mm (Ø35 - Ø42 with adaptor)			
Optic Lens	100% UV resistant Polycarbonate lenses for high impact resistance			
Coating	Anodised Aluminium and Powder coated Aluminium			
Calculated L70 (hrs)	134,000 hrs			
Colour	Silver			

<sup>(1)</sup> At 230V

\*\* Different optic options available on special request

<sup>(2)</sup> Add suffix for optics, regulation and NEMA socket inclusion

# LED STREET LIGHTS

## LEDSTL - 50W, 100W, 150W & 200W LED LUMINAIRES



ECOLight's new generation Street Lighting luminaire design incorporates high output Lumiled LED and Mean Well HLG series LED driver.

This design delivers exceptional performance in all roadway and public area applications that will significantly reduce operational costs in energy, maintenance and provide an impressive lifespan.

Available in both Silver & Black.

### APPLICATIONS

- City streets
- Highways
- Public parks
- Car parks
- Subdivisions
- Hospitals
- Corrections Facilities

### DIMENSIONS (WxLxD)

- 50W = 316mm X 431mm X 136mm
- 100W = 316mm X 504mm X 136mm
- 150W = 316mm X 577mm X 136mm
- 200W = 316mm X 723mm X 136mm

Fixture/Part No.	LEDSTL-50AC	LEDSTL-100AC	LEDSTL-150AC	LEDSTL-200AC
LED Power (W)	50	100	150	200
Lumen Output (Lm)	5,750	11,500	17,250	23,000
Weight (kg)	5.3	6.1	7.3	9.0
Luminous Efficacy	115lm/W			
Beam Angle	Types I, II, III, V			
Input Voltage	100-240VAC, 50/60Hz / 12VDC / 24VDC			100-240VAC, 50/60Hz
Maximum Current	0.36A-120V 0.18A-240V	0.67A-120V 0.33A-240V	1.03A-120V 0.51A-240V	1.70A-120V 0.85A-240V
Power Factor	>0.95			
Colour	3800-4100K / 5000-5650K / 5650-6300K			
CRI	≥75			
Working Environment	Temperature: -40°C~50°C Humidity 10%~95%			
IP Rating	IP66			
IK Rating	IK10			
Wind Velocity <sup>(1)</sup>	V = 45m/s (163km/h) height 8m / V=52m/s (188km/h) height 8m-15m / V=57m/s (205km/h) height >15m			
LED Brand	Philips Lumileds 3030			
Driver	Mean Well® HLG series (Non-dimmable)			
Heatsink	Anodised Aluminium (6063)			
Spigot	60mm diameter, 100mm depth, 8.8 grade Stainless Steel M8 bolts			
Optic Lens	PC (luminous transmittance = 9.2)			
Coating	Heatsink is anodic oxidation, remainder of fitting is anti-corrosion powder coat			
Lifespan	>100,000hrs (L70)			
Colour	Silver/Black			

# LED STREET LIGHTS

## LUXTELLA LED STREET LIGHT LUMINAIRES - AT & NZTA APPROVED

The LEDLUX-AT Series features cutting edge tunable LED luminaires perfect for all P3/P4 road lighting applications. The design incorporates high lumen output Cree XPL chips driven by Philips Xitanium Dali drivers all contained within a robust IP66 housing. Standard models come with Nema 7 multi-channel photo control receptacle that allows optional dimming functions including photocell or wireless sensor.



This European manufactured luminaire delivers exceptional performance that will at the same time substantially reduce operational costs in both energy use and in maintenance.

### APPLICATIONS

- P category streets
- Public parks
- Car parks
- Subdivisions
- Hospitals
- Corrections Facilities

TECHNICAL SPECIFICATIONS	
Fixture/Part No.	S12XPL-20AT <sup>(1)</sup>
Total Power (W)	19.5
Lumen Output (Lm)	2500
Weight (kg)	4kg
LED Efficacy (fitting)	Fitting: 128 lm/W
Optics	For Category P
Input Voltage	220-240V
Supply Current	0.09A
Maximum Inrush Current	N/A
Power Factor	0.96
Surge Protection	10kV/10kA
Colour Temperature	4000K
CRI	80
Working Environment	-40°C up to 55°C
IP Rating	IP66
IK Rating	IK10 (Aluminium Housing)
Sail Area	0.032m <sup>2</sup>
LED Brand	Cree XPL
Driver	Philips Xitanium LED driver
Dimming Receptacle	Timer, DALI or 1-10V
Heatsink	Anodised Aluminium
Spigot	Ø60mm (Ø35 - Ø42 with adaptor)
Optic Lens	UV resistant PMMA Acrylite lenses for high impact resistance
Coating	Anodised Aluminium
Calculated L70 (hrs)	134,000 hrs
Colour	Silver



### LED CHIP



High efficiency Cree LED type XPL, ensures long life and one of the highest lm/W efficiency in industry.

### LED DRIVER



- Up to 99% driver efficiency at full load with Philips Xitanium led driver
- 10kV/10kA sure protection
- Protection class I
- Dimming options: Timer, DALI or 1-10V

<sup>(1)</sup> Add suffix for optics, regulation and NEMA socket inclusion  
<sup>\*</sup> At 230V  
<sup>\*\*</sup> Different optic options available on special request

# MAINS STREET LIGHT PIT SYSTEM

## SUBMERSIBLE FUSED ELECTRICAL SUPPLY TO LIGHT POLES



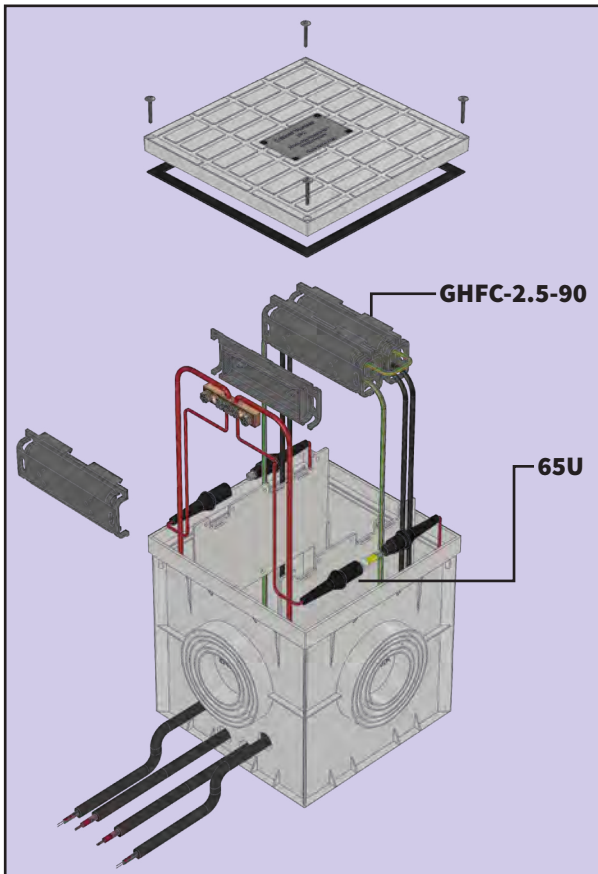
The Street light pit is a submersible cable break out system with fused supply to light poles and auxiliary items such as CCTV, WiFi, Telecom signal boosters. This pit system is approved by Auckland Transport for all Street light poles where the "Gear Door Opening size" is less than 120mm x 200mm, or where there is limited space for cable loops and multiple fused supplies within the street light pole.

### SYSTEM

Fully submersible pit system designed specifically for New Zealand applications.



As used by;



### PIT

- Dimensions: 300x300x300mm
- Colour: Grey
- Material: Polypropylene / UV Stable
- Breaking Load: 4.8kg/cm<sup>2</sup>
- Security: 4x Torx Stainless Steel Anti-tamper Screws

### ELECTRICAL

- Connections: Via 165A rated Copper Bus
- Fuse Holders: 65U Fully Submersible Fuse Carrier (Range taking 2.5mm<sup>2</sup> - 16mm<sup>2</sup>)
- Fuses: 10x38mm Barrel Type
- Sealing of Connections: Raychem Gel Enclosure (GHFC-2.5-90)
  - Easy Re-entry
  - Rugged Protection
  - Submersible

Auckland Transport (AT) specified pit Part # **TNATSLPITKIT** comes with unique AT Asset Number/Label, only sold to Approved AT Contractors.

Standard Pit Part # **TNSLPITKIT**



# MAIN EARTH INSPECTION BOX

## TNERIB - EARTH ROD CONNECTION PROTECTION

Main earth connections are an integral part of a safe installation and until recently protecting them seemed a bit of an afterthought - the main earth connection needs to be accessible but also protected to ensure the integrity of the connection isn't compromised.

The main earth connection in domestic installations often ends up in garden beds or on footpaths outside the house. The best way to protect the connection, while at the same time allowing unobstructed access for later inspection, is to cover it with a purpose-built inspection box.

TransNet has engineered a product specifically for this - the TNERIB, custom-designed inspection box with a hinged latching lid for easy access. This specially designed lid is strengthened for longevity and to enable easy installation in footpaths where it blends well with paving.

### FEATURES

- Heavy duty strengthened, hinged lid
- Lid latches closed
- UV stabilised Polypropylene
- Embossed lid detail
- Designed and manufactured in NZ
- Dimensions: 120mm X 120mm X 200mm tall

### THE KEY POINTS

- In order to easily fit into cobblestone work the top portion is square. To retain the strength of the section that goes in the ground, the buried region remains round, as round is much stronger and less likely to cave in if the ground around it is compacted.
- The lid is hinged and latches into place, offering a far superior solution for retaining the lid, the lid can't simply come free from the box.
- To find a solution to the potential Health and Safety Hazard of an ill fitting lid the TNERIB lid must be prised off with a tool not just removed by hand. An easy to remove lid makes it very easy for kids to touch the earth wire/rod. There is a risk of electric shock from touching the earth wire/rod if there is a poor earth and the rod becomes live.
- Rain water access is important. The access for rain is extensive on the TNERIB, firstly the gaps around the lid total up to 700mm<sup>2</sup> of area allowing the rain water to flow into the enclosure, other lids offer only 314mm<sup>2</sup>. The TNERIB square lid acts as a water catchment area collecting even more, which in turn flows into the box.
- We enquired about the Electrical Regulations requirements for labelling to ensure the wording on the lid was correct before it was produced.



Product #  
TNERIB





# STREET LIGHT CONNECTIONS

## FD150-1-NZ SINGLE PHASE STREET LIGHT CUTOUT



The Charles Endirect range of cutouts has been designed for strength, durability, ease of installation and to meet the full requirements of BS 7654. The range features a secure and quick release carrier to provide safe and easy access to fuses and outgoing terminals.

This easy to use, slimline cutout is made to the highest quality standards using the best materials available in order to offer a long and reliable service life.

With safety at the forefront of the design process, the special cam operated fuse handle ensures electrical disconnection is achieved before the unit is opened and the fuse carrier extracted.

### TECHNICAL SPECIFICATIONS

- Single pole isolation
- Single fuse (BS 88 Part 1, AC 16 tag type)
- 25A max fuse rating
- IP22 rated
- Sealing wire facility
- Max cable size is 10mm<sup>2</sup>
- 6A fuse link included (spares also available for sale, Cat No. LST6)
- Electroplated brass terminals with serrated bores for better cable retention
- PVC grommets at cable entry points
- Designed and tested in accordance with BS 7654: 1997
- Outgoing cables exit below horizontal to ensure drip loop is formed

### DIMENSIONS

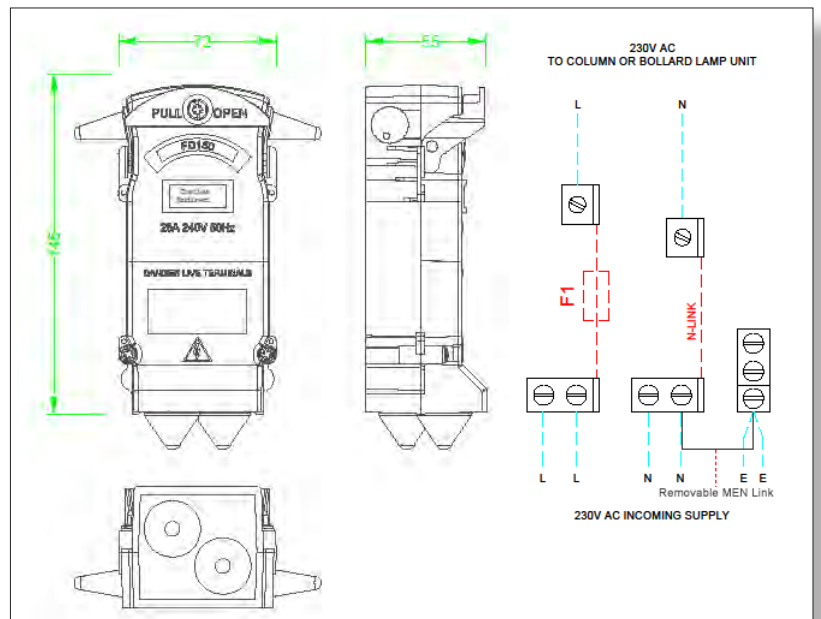
- 150mm high
- 69mm wide
- 56mm deep



Base



Cover



# STREET LIGHT CONNECTIONS

## TNSLPKIT - FUSED STREET LIGHT BOARD

Light poles are classified as an 'electrical installation' under electricity regulations, meaning they carry highly specific legal requirements in relation to earthing, protection and isolation devices.

"An electrical installation needs an isolating device, formal protection, an earth neutral bar, and an earth stay," and the TNSLPKIT is just the answer!

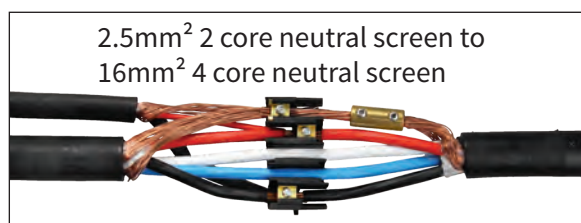
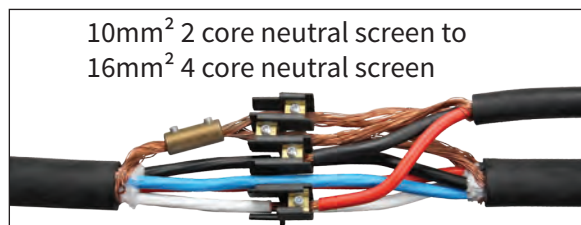
### FEATURES

- Removable MEN link
- Fuse carrier includes 6A 10x38mm barrel fuse link
- All brass electrical connections
- Fuse carrier terminal capacity 1-25mm<sup>2</sup>
- NOARK fuse carrier meets requirements of IEC/EN 60947-3
- Rated to 32A
- Stainless steel spring loaded mounting hook
- Dimensions: 285H x 50W x 90-110D\* (mm)

\*90mm closed, 110mm open



## LVRG-NS-STL - STREET LIGHT JOINT UP TO 16MM<sup>2</sup> NEUTRAL SCREEN



The joints have been adapted to cater for Neutral screen cables and have a comprehensive installation instruction included. All connectors and sundry items are included in the kit.

### FEATURES

- Quick and easy installation
- Suitable for outdoor and direct burial situations
- Full branch capabilities without cutting the main cable
- Qualified to joint standard EN 50393
- Halogen free and UV resistant
- Unlimited shelf life
- 3-5 cores up to 16mm<sup>2</sup>



# LUMINAIRE COMPONENTS

## LEDSTL-ADAPTOR-35-42



Spigot sleeve reducer. Designed to fit into a standard 60mm street light spigot sleeve where outreach arm is between 42mm and 35mm.

Made from Aluminium

## LEDSTL-76-60-BRAC

Spigot sleeve expander. Designed to fit into a standard 60mm street light spigot sleeve where pole top diameter is between 60mm and 76mm.

Made from Galvanised Steel



## LEDSSL - PHOTOCELLS & BLANKING PLUGS FOR STREET LIGHTS



- Rated Load: 1000W tungsten lamp, 1800VA ballast lamp
- Automatically turns lights on at dusk and off at dawn
- Automatic control with low energy usage
- Easy to install
- Used in street lighting, highways, factories, gardens, ports, airports, farms, parks, schools etc.
- Fail mode = ON
- Blanking Plug for when photocell is not required

Cat No.	Description
LEDSSL-PHOTOCELL	ARL-M-208-277 PHOTOCCELL SOUTH BROWN
TNL6005	PHOTO CELL BLANKING PLUG



# COMPONENTS

## 65U - WATERPROOF FUSE CARRIER

- UV stable with waterproof seal
- Compression style installation connectors
- 600V/30A fuse carrier
- Accepts 10x38mm HRC fuse up to 32A
- For use in shear-away lighting columns
- Range taking housing easily adjusted to achieve the perfect seal



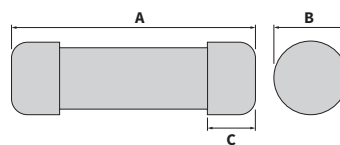
## K223 - OVERHEAD FUSED IPC

- UV stable – waterproof seals
- M=16-95mm<sup>2</sup>, T=1.5-10mm<sup>2</sup>
- Torque control shear head
- Accepts Cu or Ali Conductor
- Accepts 10x38mm HRC fuse up to 20A

\*Pictured with CH10NB0xx fuse link, not included with K223, each sold separately

## CH10-NB0xx - 10X38MM CYLINDRICAL HRC FUSE LINK

- Rated Voltage: 500V AC
- Rated breaking capacity: 120kA
- Standard specifications: IEC 60269-2-1
- Class: gG/gL
- Available in 2A up to 32A ratings
- Dimensions LxWxC: 38mm X 10.3mm x 9.5mm
- Fits: 65U, K223, TNSLPKIT
- Part Number: CH10-NB0xx (xx = amps)  
example: CH10-NB016 = 16amp fuse



# COMPONENTS

## TNEARTH TAG - PLASTIC EARTH IDENTIFICATION TAG

Green plastic industry recognised “earth tag” to identify the cable it is connected to is an earth and must remain connected.



- Easy to install
- Easily identify earthing connectors
- UV stabilised plastic
- Won't slip
- Sold in packs of 100
- Made in New Zealand
- The wording on the tag says:  
EARTHING CONDUCTOR  
DO NOT DISCONNECT

## TNSLGR3 - COMPLETE EARTH FOR STREET LIGHT POLES

- 13mm copper bonded rod
- Pre-welded
- 3m of 10mm<sup>2</sup> cable attached
- Cadweld and copper conductor included
- Able to be buried
- Position of the weld allows for driving Head Tool
- Allows for clear area under ground for connection
- ERICO rod 1840mm long
- Cable size can be customised - contact us for details

\*Pictured with TNERIB & TNEARTH TAG, each sold separately



## RAYCHEM GEL ENCLOSURE & MINI WEDGE

- Fully moisture sealed & protected in robust UV stable case
- Direct burial
- Filled with Raychem PowerGel
- No Heatshrink or resin, Re-entry is easy
- Range taking mini wedge connectors
- Bimetal connections OK
- Perfect, no fuss branch connection for street lights
- No special tools
- Part Number: 3-1199125-2 Gel Enclosure (snot box), contact us for Mini Wedge Selection



# COMPONENTS

## GELWRAP18/4-250 - RAYCHEM GELWRAP

- Simply wrap and snap the sleeve on any cable in the use range
- Easy and quick to install
- For splice cover, cable re-jacketing, underground or overhead applications
- Closure sleeves are compatible with solid dielectric cable insulations
- No special tools
- Range taking
- Full moisture seal once installed



## GHFC - RAYCHEM GEL ENCLOSURE

- Filled with Raychem PowerGel
- Capacity to seal up to 4 core, 6-25mm<sup>2</sup> cables
- Direct bury - Liven immediately
- Connector blocks included in some models
- No special tools
- 1000V rated

Cat No.	Cable Size (mm <sup>2</sup> )		Dimensions (mm)		
	Main	Tap	Length	Width	Height
GHFC-1-90	16-35	2.5-10	70	41	27
GHFC-2-90	35-70	2.5-16	108	51	30
GHFC-2.5-90	50-95	16-85	179	70	40
GHFC-3-90	185	95	159	83	49

## 2-361372-1 - RAYCHEM GELCAP SL JOINT

- Fast & easy installation
- Raychem PowerGel sealing gel
- Superior moisture seal
- Temperature range -40°C to 105°C
- Cap is UV stable, insulating and offers excellent abrasion protection
- Range Taking Connector  
2 x 2.5mm<sup>2</sup>-70mm<sup>2</sup> and  
1 x 2.5mm<sup>2</sup>-10mm<sup>2</sup>
- No extra materials or greases are required
- Simple Allen Key fastening





# COMPONENTS

## FCHDO40 - HEAVY DUTY FLEXI CONDUIT, ORANGE



Heavy duty electrical conduit has high impact and compression resistance, ideal for underground installations. Made from uPVC which gives it great insulating properties as well as protection against chemicals and corrosion. This product has been manufactured to AS/NZS:2053 standards.

### SPECIFICATIONS

- Colour: Orange
- Nominal Size: 40mm
- Length: 25m (sold in 25m rolls)
- Weight per M: 0.23kg
- Cube per Roll: 0.05m<sup>3</sup>

## TRANSNET OFFERS A COMPREHENSIVE RANGE OF PRODUCTS...

<b>Cable Accessories</b> 	<b>Tools</b> 	<b>Test &amp; Measurement</b> 	<b>EVSE</b> 	<b>Connectors</b> 
<b>Heatshrink</b> 	<b>Duct Seals &amp; Glands</b> 	<b>Cable Management</b> 	<b>Cable Protection</b> 	<b>Circuit Protection</b> 
<b>Earthing</b> 	<b>ECOLight LED Lights</b> 	<b>Fireproofing</b> 	<b>Hazardous Area Solutions</b> 	<b>Switchgear</b> 
<b>Asset Protection</b> 	<b>Line Hardware</b> 	<b>Insulators</b> 	<b>Pillars &amp; Pits</b> 	<b>Personal Insulating &amp; Safety Equipment</b> 



**TRANSNET NEW ZEALAND LTD**



0800 442 182 +64 9 274 3340 sales@transnet.co.nz

**Auckland**

78 Cryers Road  
East Tamaki  
Auckland  
NEW ZEALAND  
Ph 0800 442 182  
Fax 0800 442 183  
PO Box 39 383  
Howick, Auckland  
NEW ZEALAND

**Wellington**

10 Petone Ave  
Petone  
Wellington  
NEW ZEALAND  
Ph 04 576 2530  
Fax 04 576 0040  
PO Box 39 383  
Howick, Auckland

**TRANSNET TONGA**

**Ma'ufanga**

Small Industries  
Ma'ufanga  
TONGA  
Ph +67 627 939  
Fax +67 627 976  
PO Box 2932  
Nukualofa  
TONGA  
transnet@kalianet.to



[www.transnet.co.nz](http://www.transnet.co.nz)

Edition: 001-02/19

TransNet NZ Ltd has made every reasonable effort to ensure the accuracy of this information and it is to the best of our knowledge correct and reliable. Under no circumstances does this constitute an assurance of any particular quality or performance and users should independently evaluate the suitability of products for their desired application. All information in this publication including pricing, drawings, illustrations, images and graphic designs are reflections of our current understanding. TransNet NZ Ltd reserves the right to make any adjustment to this information at any time. Our liability for the products outlined in this publication is set forth in our standard terms and conditions of trade. In case of any potential ambiguities or questions, please contact us for clarification.

